



Department of
Environmental
Conservation



AMR Pilot Reservation System Frequently Asked Questions

DEC and the Adirondack Mountain Reserve (AMR) launched a no-cost pilot reservation system in 2021 to address public safety at a heavily traveled stretch of Route 73 in the Town of Keene in the Adirondack High Peaks. The reservation system, operated by AMR, facilitates safer public access to trailheads through the AMR gate and the Noonmark and Round Mountain trailheads located on AMR property. It also improves visitors' trip planning and preparation by ensuring they have guaranteed parking upon arrival.

The Adirondack Mountain Reserve is a privately owned 7,000-acre land parcel located in the Town of Keene Valley that allows for limited public access through a conservation easement agreement with DEC. The pilot reservation system does not apply to other areas in the Adirondack Park. (See map below)

No-cost reservations will be required May 1 through Oct. 31, 2023 for parking, daily access, and overnight access to trailheads and trails on AMR property. Visitors can make reservations beginning April 17 at www.hikeamr.org. Walk-in users without a reservation will not be permitted.

- There is no cost associated with making a reservation.
- Reservations can be made up to two weeks in advance of the date of reservation, up to 12 hours before.
- Those arriving to Keene Valley via Greyhound or Trailways bus lines may present a valid bus ticket from within 24 hours of arrival to the AMR parking lot attendant in lieu of a reservation.
- Those being dropped off or arriving by bicycle must check in at the AMR Hiker Parking Lot and produce a valid reservation.
- The AMR parking lot is accessible for entry between the hours of 5 a.m. and 7 p.m. daily. An automatic one-way gate allows for departure at any time. Day users must depart prior to 5 a.m. the morning following the day of their reservation.
- Walk or bike-in users with a reservation who arrive before 5 a.m. will be asked to provide their reservation upon exit of the AMR gate.
- Bike racks, portable restrooms, and hiker information are available at the parking lot.

TABLE OF CONTENTS

MAKING A RESERVATION	2
IF RESERVATIONS ARE FULL	3
WHEN YOU ARRIVE	3
WHY A RESERVATION SYSTEM?	4
VISITING THE ADIRONDACK MOUNTAIN RESERVE	5
MAP:	6

Frequently Asked Questions

MAKING A RESERVATION

- How do I make a reservation?
 - Reservations for day and overnight use can be made at www.hikeamr.org. You will need to create a user account before making a reservation. For questions regarding the reservation system itself, please use the Contact Us form on the reservation website or email infoandeducation@hikeamr.org.
- Is there a cost associated with making a reservation?
 - No, there is no cost associated with making a reservation.
- How soon before my trip can I make a reservation?
 - When the system opens on April 17, reservations will be available from May 1 to May 14. Starting May 2 and thereafter, reservations can be made up to two weeks in advance of the date of reservation, up to 12 hours before.
- How many reservations are available per day?
 - 70 reservations are available per day. These can be taken up by vehicles, drop offs, and those arriving by bicycle.
- I am planning on camping at a site accessed through AMR lands. Can I reserve an overnight spot?
 - Yes. Overnight spots can be reserved for up to three nights.
- I am getting dropped off – do I need a reservation?
 - Yes. Visitors who are dropped off (or walk in) require a reservation and should be dropped off in a parking spot within the Hiker Parking Lot.
- How many people are covered by a reservation/what is the maximum number of individuals permitted per car?
 - Each reservation accommodates up to 8 people. Cars or vans carrying up to 15 people are permitted. Larger groups will need to make additional reservations to account for all members of their group. For example, a single vehicle carrying 15 people would need to make 2 reservations.
- I am bringing a large group – are vans/buses permitted?
 - Parking is available for vehicles carrying up to 15 people. Parking is not available for buses. Vehicles carrying more than 8 people will require multiple reservations.
 - Overnight and day use group size limits on forest preserve lands still apply – please see rules and requirements here <https://www.dec.ny.gov/outdoor/41282.html> and <https://www.dec.ny.gov/lands/9164.html>
- My group is coming in multiple cars. Can I make a reservation for multiple spots?

- Only one spot can be reserved per reservation. Each driver will need to reserve a spot for their vehicle individually.
- Is there a limit to how many reservations one person/group can make?
 - Individual visitors are limited to two reservations per week, one per day. There are no limits to the number of reservations you can make over the course of the season.
- What if there is bad weather on the day of my hike? Can I postpone my reservation?
 - Rain dates and postponements are not available.
- I am planning on accessing the AMR property from a different trailhead. Do I need a reservation?
 - No, users accessing the AMR property from other trailheads, such as on the Elk Lake-Marcy Trail or from Johns Brook Valley, do not need a reservation.

IF RESERVATIONS ARE FULL

- Is there a wait list for cancellations?
 - There is no waitlist.
- All the spots are reserved. Where else can I park?
 - Roadside parking on Route 73 in the vicinity of AMR is dangerous and illegal. Park only in designated lots and adhere to posted parking restrictions. Illegally parked vehicles will be ticketed and potentially towed at the owner's expense.
 - First come, first serve parking is limited at other popular trailheads along the Route 73 corridor. Come prepared with back-up plans in case trailhead parking lots are full.
 - **Please note** – you cannot park elsewhere and walk into AMR without a parking reservation.
- Will the reservation system provide information about alternative trip possibilities if reservations are not available?
 - The reservation system provides a link to alternative trip options in the region.

WHEN YOU ARRIVE

- I planned to bike to the trailhead. Where can I leave my bike?
 - Bike racks are available at the Hiker Parking Lot. Reservations are still required if you are arriving by bicycle.
- What if I want to arrive early or leave late?
 - The AMR parking lot is staffed between the hours of 5 a.m. and 7 p.m. daily. Entrance is only permitted at these times. An automatic one-way gate allows for

departure at any time. Day users must depart prior to 5 a.m. the morning following the day of their reservation.

- Drop-off and bicycle users with a reservation who arrive before 5 a.m. may access the trails but will be asked to provide their reservation upon exiting the gate.
- Overnight sleeping in a car and/or tent in the parking lot is not allowed.
- Are there bathrooms at the trailhead?
 - Portable toilets are available for public use at the AMR Hiker Parking Lot.
- I am arriving in Keene by bus. How can I access AMR?
 - If you are arriving to Keene Valley via Greyhound or Trailways bus lines, you may access AMR with a valid bus ticket from within 24 hours of arrival. Check in at the AMR hiker parking lot and present your ticket to the attendant.
- Where can I find additional information about my hike and outdoor recreation at AMR?
 - Parking stewards at the AMR Hiker Parking Lot can answer questions about your hike and provide information about safe, sustainable recreation on AMR lands. The reservation system also provides information about Leave No Trace principles and backcountry safety. Do your research before you arrive and come prepared with maps of your desired hike and the hiking essentials.

WHY A RESERVATION SYSTEM?

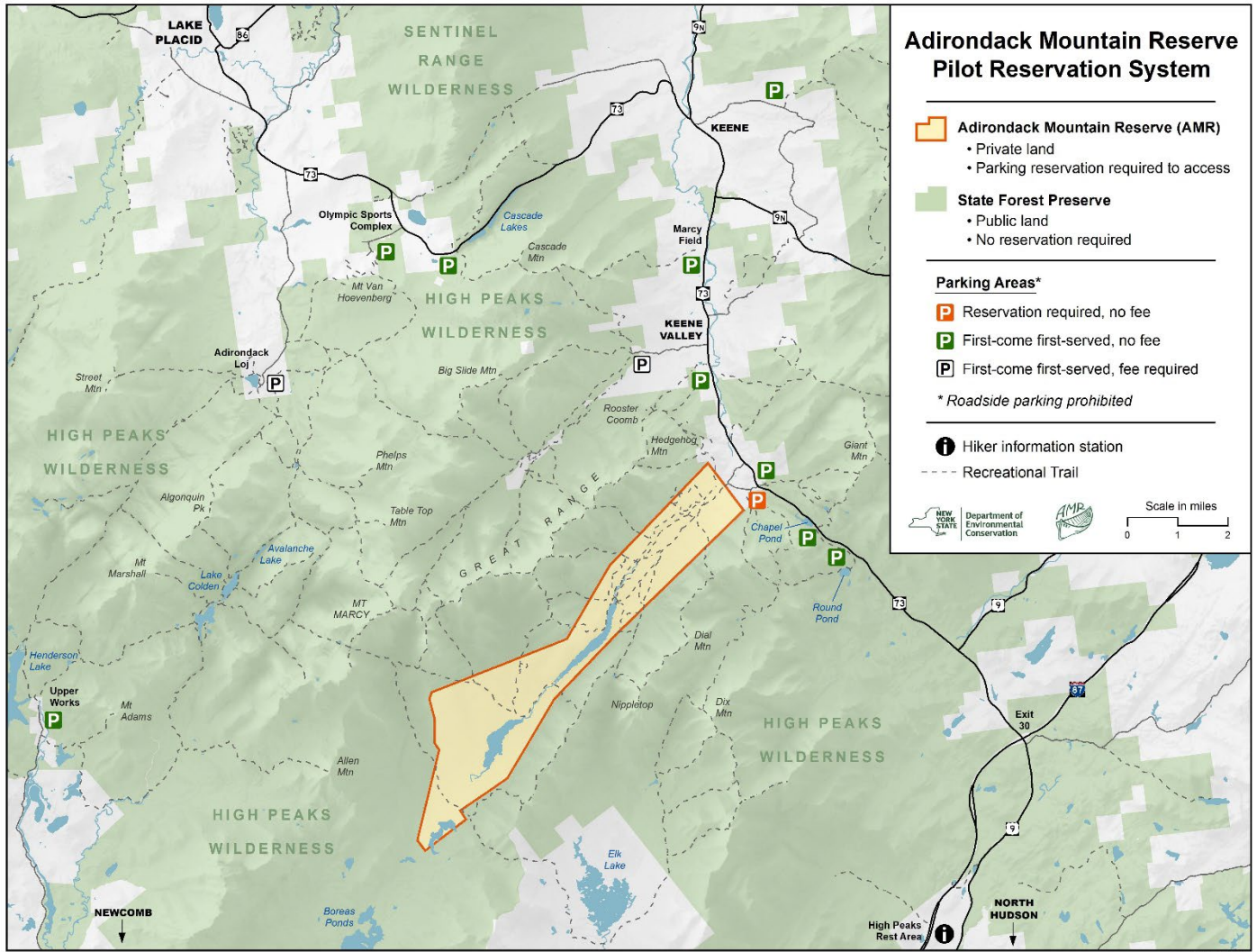
- Why do I need a reservation?
 - In recent years pedestrian traffic, illegal parking, and roadside stopping along Route 73 have created a dangerous environment for hikers and motorists alike. DEC and AMR launched this pilot reservation system in 2021 to facilitate safer public access to trails through the AMR gate and the Round Mountain and Noonmark Mountain trailheads accessed through AMR lands.
- Is this a permit system?
 - This is not a permit system; this is a pilot parking reservation system for a specific location on private land. New York State has worked closely with AMR and other partners to improve public safety and protect natural resources at this specific location. To address concerns related to public safety at this particularly congested area, DEC and AMR are piloting the reservation system for this specific location only. DEC still considers a permit system to be a tool of last resort.
- Is there a limit on the overall number of hikers permitted to access AMR trails per day?
 - 70 Reservations are available. These can be taken up by vehicles, drop offs, and those arriving by bicycle. Each reservation can accommodate up to 8 people, allowing for as many as 560 total visitors per day.
- How will this program be enforced?

- DEC Forest Rangers and AMR security staff will provide enforcement assistance as needed. Visitors without a reservation will be directed to move on to Marcy Field or the visitor center at Mt. Van Hoevenberg to find information on alternate destinations. Illegally parked vehicles may be ticketed and towed.
- What happens if someone doesn't show up for their reservation?
 - To avoid unused reservations, the reservation system provides information about and encourages cancellation of reservations if visitor plans change. Reminder emails are also sent out as the date of reservation approaches, reminding users to cancel their reservation if they no longer need it.

VISITING THE ADIRONDACK MOUNTAIN RESERVE

- What other regulations apply?
 - All other regulations for the Adirondack Mountain Reserve remain the same:
 - Bicycles are not allowed past the parking area;
 - Hikers must stay on marked hiking trails;
 - Dogs are not allowed on the property;
 - Hunting, trapping, and fishing are prohibited;
 - The public is not allowed to enter on the shores, swim or boat on all lakes, streams, or rivers; or cross the frozen lakes in winter;
 - Entering buildings is prohibited.
 - Visit the Adirondack Mountain Reserve Conservation Easement Tract page on DEC's website for a full list of rules and regulations.
 - In addition to the formal rules and regulations, follow the Leave No Trace Seven Principles and carry out what you carry in, including all gear, garbage, and food scraps. Use designated toilets when available and dispose of waste responsibly.
- What hikes can I access from AMR?
 - Hikes accessed primarily through the AMR gate include: Dial, Nippletop, Bears Den, Blake, Colvin, Indian Head and Fishhawk Cliffs, Pinnacle, Rainbow Falls, Beaver Meadow Falls, Cathedral Rocks and Bear Run. There are also trails leading from AMR lands to Hedgehog Mountain and the Lower and Upper Great Range, including Lower and Upper Wolfjaw, Armstrong, Sawteeth, Gothics, Saddleback, Basin and Haystack. Many of these mountains can be reached by trails accessed from other trailheads.
- Will someone be staffing the lot from 5 a.m. to 7 p.m.?
 - The lot will be staffed from 5 a.m. to 7 p.m.; security will be on the grounds until 10:00 p.m.
- What accessibility accommodations are available?
 - AMR has several accessible parking spaces available. Trails are not ADA compliant, but transportation from the parking lot to the main trailhead is available upon request. AMR is happy to discuss further accommodations on a case-by-case basis.

MAP:



March 2022